

*Materials and Finishes Maintenance*  
*Eco-Leather and Marine*

# Materials and Finishes Maintenance

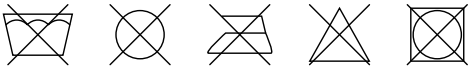
## Eco-leather and marine



### YACHT REGATTA - Cat.C

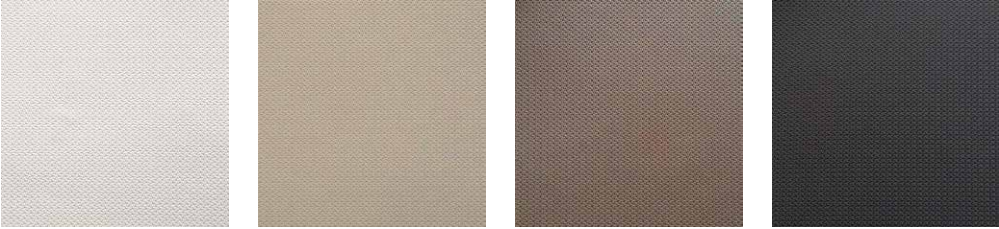


111 Off white      101 Canvas      402 Brown      701 Blue      200 Black

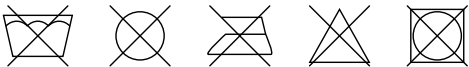


REGULAR CLEANING

### TEXTURE - Cat.D



42161 White      42163 Canvas      42166 Bronze      42171 Black



REGULAR CLEANING

### TERASKIN NAPPA - Cat.F



111 White      103 Oyster      408 Chocolate      700 Navy      200 Black



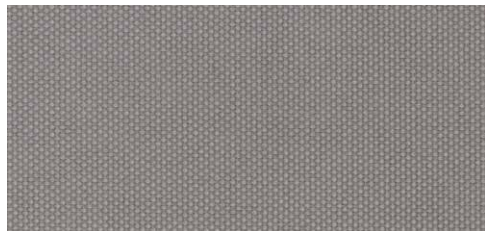
REGULAR CLEANING

# Materials and Finishes Maintenance

## *Eco-leather and marine - Protective covers*



DICKSON SURLAST



Light grey



**Stain Resistant**



**Easy Maintenance**



For a correct use, it is recommended to cover the furniture only if perfectly clean and dry and to insert the cover in the correct position on the article. If the cover is placed on damp or wet furniture, take care to remove it within a few hours and allow both the furniture and the cover to dry well. Never store or fold wet or damp covers, but allow them to dry in a well-ventilated area.

One of the best ways to keep your protective cover made on Surlast looking good is to hose fabrics off on a monthly basis with clear water.

When it's time for a thorough cleaning, Surlast can be cleaned while still on site or, size permitting, they can be removed for cleaning in a washing machine.

### **General cleaning**

- Brush the fabric to remove surface dirt.
- Spray the fabric with cold water.
- Prepare a mixture of soap and water. 1/4 cup mild soap, such as Woolite or Dawn dishwashing liquid, per gallon of lukewarm water.
- Rub the mixture onto the fabric with a soft brush.
- Allow the mixture to act on the fabric.
- Rinse thoroughly with clean water until the cleaning solution is completely removed.
- Allow the fabric to dry in the open air.

### **Spot stains cleaning**

- Prepare a mixture of soap and water. 1/4 cup mild soap, such as Woolite or Dawn dishwashing liquid, per gallon of lukewarm water.
- Apply the mixture using a spray bottle.
- Work the solution into the stain by lightly scrubbing the area with a sponge or very soft bristle brush.
- Rinse thoroughly to remove all soap residue.
- Blot excess moisture with a clean, soft towel or sponge.
- Wet-vacuum or blot excess water.
- Air dry. Repeat steps 3 and 4 until all soap residue is removed.

**To get rid of mould**, use a solution of 1/10 bleach, 2/10 soap and 7/10 water instead of the mixture of soap and water.

### **For removable Surlast covers**

#### **Hand washing**

- Soak fabric in a solution of 1/4 cup mild soap per gallon of lukewarm water.
- Use a sponge or a soft bristle brush as necessary.
- Rinse thoroughly to remove all soap residue.
- Air dry.

#### **Machine washing**

Machine wash in cold water. Depending on wash load size, use normal amounts of mild laundry detergent and add 1 cup of bleach. Allow fabric to air dry.

### **Tips**

DO NOT dry clean. Surlast air-dries very quickly. Machine drying is not necessary. If fabric has some wrinkling, use an iron, if necessary, but only on the synthetic setting. As some irons exceed the recommended temperature on the synthetic setting, test a small inconspicuous area before ironing entire piece.

DO NOT use a steamer or iron set to steam setting.



Is a trademark licensed to



DFN srl - Italy  
*via D. Albertario 50 – 61032 – Fano (PU)*  
*T. 00 39 0721 1835821*

*e-mail: [info@dfnsrl.com](mailto:info@dfnsrl.com)*

[www.dfnsrl.com](http://www.dfnsrl.com)